

2014



403, 4th Floor, Al-Rehman Center, Shahra-e-Faisal, Karachi

tel: +92 21 431 6242, +92 21 431 6575

fax: +92 21 455 4986

email: info@catalyst.pk

<http://www.catalyst.pk>



TRADE CAST

Version 1.0.2

TradeCast User Guide

Revision sheet

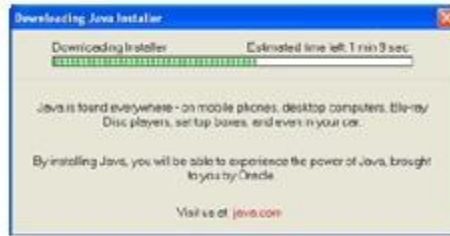
Revision History

Version	Date	Revision Description
V 1.0.1	21- JAN – 2013	
V 1.0.2	6 – FEB – 2014	Update

Java Installation

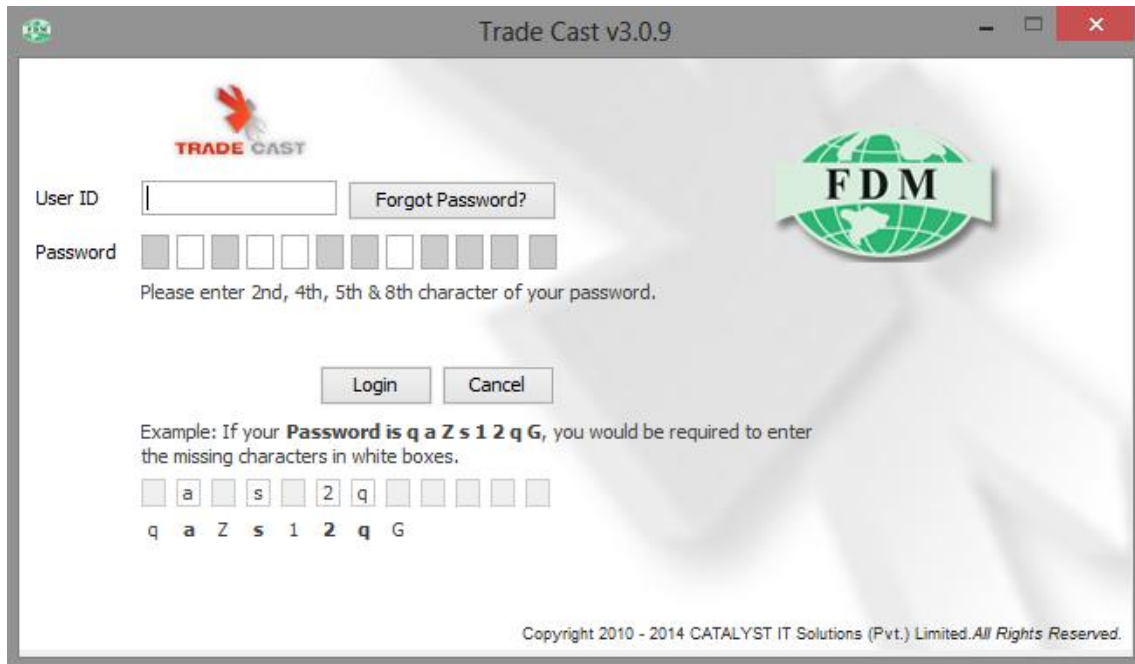
If Java is not installed in your computer, follow the procedure mentioned below



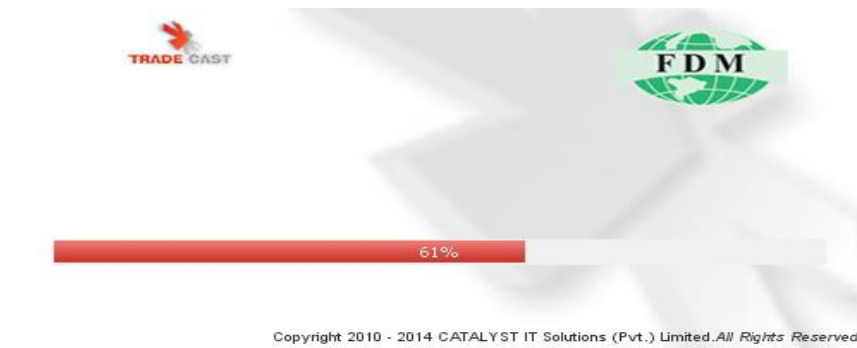


Login Screen

After downloading the application, following window will appear.



Enter Username and auto generated Password communicated on the provided email. Following window will appear,



Auto-generated password only works on the first login. After login, password must be changed. Following window will appear after setting the password,

The screenshot displays the TradeCast v3.0.9 interface. At the top, it shows the company name 'FDM Capital Securities(Pvt.) Limited' and the time '11:37:54 Feb 26, 2014'. Below this is a menu bar with options like 'File', 'View', 'Order', 'Monitor', 'Inquiry', 'Services', 'Tools', 'Tickers', 'Themes', and 'FDM Help'. A status bar at the top right shows 'Connected @ PKT 11:37:54 Feb 26, 2014' and 'catalyst 00:02:55'. The main area is divided into several sections: 'KSE Indices' showing KSE 100 at 25,611.11 (+0.20%), 'Market Depth By Order' for Pakistan Telecommunication Co. with columns for Flag, Volume, Price, and L.Trade, and 'Market Depth By Price' for Pakistan Oilfields Limited. A table of securities for Pakistan Telecommunication Co. is visible, listing scrips like DCL, BYCO, ENGRO, FCCL, BOP, FABL, TRG, DGKC, TELE, PSO, KEL, SILK, and FATIMA with their respective buy/sell volumes and prices. A 'Message Window' at the bottom shows system messages and activity logs.

Buy Window (F4)

The 'Buy (Pakistan Telecommunication Co.)' window is shown. It features a teal background and includes the following fields: Market (REG), Order Type (Limit), Volume (100), Scrip (PTC), Price (0), Account (1814), and PIN. Below these are 'Disc Volume' (0) and 'Limit Price' (0) fields, along with a 'Save PIN' checkbox and a 'Send Order' button. A summary table at the bottom displays: Buy Vol (4,000), Buy (29.16), Sell (29.26), Sell Vol (500), Change (0.69), Last Trade (29.16), Lower Lock (27.05), and Upper Cap (29.89). A message 'Please enter Volume.' is displayed at the bottom left, and 'Forgot PIN?' and 'Settings' buttons are at the bottom right.

Sell Wndow (F5)

The 'Sell (Pakistan Telecommunication Co.)' window is shown. It features a grey background and includes the following fields: Market (REG), Order Type (Limit), Volume (100), Scrip (PTC), Price (0), Account (1814), and PIN. Below these are 'Disc Volume' (0) and 'Limit Price' (0) fields, along with a 'Save PIN' checkbox and a 'Send Order' button. A summary table at the bottom displays: Buy Vol (4,000), Buy (29.16), Sell (29.26), Sell Vol (500), Change (0.69), Last Trade (29.16), Lower Lock (27.05), and Upper Cap (29.89). A message 'Please enter Volume.' is displayed at the bottom left, and 'Forgot PIN?' and 'Settings' buttons are at the bottom right.

Short Sell Window (F8)

Short Sell (Pakistan Telecommunication Co.) ✖

Market	Order Type	Volume	Scrp	Price	Account	PIN
REG	Limit	100	PTC	0	1814	
Disc Volume	0	Limit Price	0	<input type="checkbox"/> Save PIN	Send Order	
Buy Vol	Buy	Sell	Sell Vol	Change	Last Trade	Lower Lock
2,500	29.17	29.26	500	0.69	29.16	27.05
Please enter Volume.						Forgot PIN? Settings

MBO (Ctrl + F2) & MBP (Ctrl + F3)

Market Depth By Order ✖

Market REG | Scrp FCCL | L.Trade 15.59 Details

Flag	Volume	Price	Price	Volume	Flag	
dc	3,500	15.57	15.59	500	dc	
dc	15,000	15.55	15.59	500	dc	
dc	2,000	15.53	15.59	1,000	dc	
dc	15,000	15.52	15.60	4,000	dc	
dc	25,000	15.51	15.60	500	dc	
dc	4,000	15.51	15.60	90,000	dc	
dc	5,000	15.51	15.60	500	dc	
dc	2,500	15.51	15.60	1,000	dc	
		127,000	15.51	15.60	99,500	
		Tot. Vol.	Avg. Prc.	Avg. Prc.	Tot. Vol.	

Fauji Cement Co Ltd. - Constructio...

Market Depth By Price ✖

Market REG | Scrp FCCL | L.Trade 15.59 Details

Flag	Volume	Price	Price	Volume	Flag	
1	3,500	15.57	15.59	2,000	3	
1	15,000	15.55	15.60	121,500	11	
1	2,000	15.53	15.61	2,000	3	
1	15,000	15.52	15.62	500	1	
4	36,500	15.51	15.63	6,000	3	
9	133,500	15.50	15.64	500	1	
1	5,000	15.49	15.65	177,000	13	
1	1,000	15.47	15.66	1,500	2	
		256,000	15.50	15.63	336,500	
		Tot. Vol.	Avg. Prc.	Avg. Prc.	Tot. Vol.	

Fauji Cement Co Ltd. - Constructio...

Top 30 Movers (Ctrl + T)

Top 30 Movers						
By Volume	By Price Increase	By % Increase	By Price Decrease	By % Decrease		
Scrip	Company	Last	Change	%Change	Volume	Trades
BOPR1	Bank Of Punjab.(R) - Sector	0.54	0.01	1.89	9,116,500	1,007
PTC	Pakistan Telecommunication Co. - Fixe...	29.17	0.70	2.46	4,921,000	1,104
AICL	Adamjee Insurance Co. Ltd. - Non Life ...	42.16	0.49	1.18	4,790,000	1,846
EFERT	Engro Fertilizers Limited. - Sector	60.30	1.26	2.13	4,669,000	2,643
MLCF	Maple Leaf Cement Factory Ltd. - Con...	28.71	-0.20	-0.69	4,439,000	888
BAFL	Bank Alfalah Ltd. - Commercial Banks S...	28.36	0.38	1.36	3,924,500	343
JSIL	JS Investments Limited. - Financial Ser...	11.45	-0.49	-4.10	3,475,500	990
JSCL	Jahangir Siddiqui & Company Ltd. - Fin...	11.62	0.11	0.96	3,445,500	718
LPCL	Lafarge Pakistan Cement Limited. - Co...	11.30	-0.02	-0.18	2,421,500	511
DCL	Dewan Cement Limited. - Construction ...	8.55	-0.01	-0.12	2,240,500	330
BYCO	BYCO Petroleum Pak Ltd. - Oil and Gas ...	10.82	-0.04	-0.37	2,035,500	581
ENGRO	Engro Corporation Limited. - Chemicals...	183.85	1.02	0.56	1,945,100	1,751
FCCL	Fauji Cement Co Ltd. - Construction an...	16.18	-0.07	-0.43	1,748,000	284
BOP	Bank Of Punjab. - Commercial Banks S...	10.61	-0.03	-0.28	1,721,000	357
FABL	Faysal Bank Limited. - Commercial Bank...	12.02	0.07	0.59	1,524,000	257
TRG	TRG Pakistan Ltd. - Support Services S...	12.80	0.08	0.63	1,388,000	169
DGKC	D. G. Khan Cement Co. Ltd. - Construc...	86.60	-0.61	-0.70	1,352,000	532
TELE	Telecard Ltd. - Fixed Line Telecommuni...	5.26	0.10	1.94	1,193,500	267
PSO	Pakistan State Oil Co Ltd. - Oil and Gas...	346.34	4.91	1.44	973,500	1,411
KEL	K-Electric Limited. - Sector	6.15	-0.08	-1.28	635,500	121
SILK	SILK Bank Limited - Commercial Banks S...	2.05	-0.01	-0.49	623,500	21
FATIMA	Fatima Fertilizer Co Ltd. - Chemicals Se...	28.60	0.10	0.35	592,000	74
PIOC	Pioneer Cement Ltd. - Construction an...	40.23	0.13	0.32	591,000	270
MDTL	Media Times Limited. - Media Sector	2.97	-0.09	-2.94	540,500	59
PIAA	Pakistan International Airline - Travel a...	7.84	-0.02	-0.25	445,500	140
NIB	NIB Bank Limited - Commercial Banks S...	2.30	0.00	0.00	428,000	43
FPJM	First Punjab Mod. - Equity Investment ...	2.61	0.36	16.00	419,000	107
HMB	Habib Metropolitan Bank Limited. - Com...	24.40	0.40	1.67	416,500	94
JSBL	JS Bank Limited. - Commercial Banks S...	4.30	-0.02	-0.46	404,000	129
UBL	United Bank Ltd. - Commercial Banks S...	134.85	1.34	1.00	385,500	161

Shortcuts

Shortcuts for Logs are shown in the following window,

The screenshot displays the TradeCast v3.0.9 interface for FDM Capital Securities(Pvt.) Limited. The main window shows a 'Scrip Browse' table for Pakistan Telecommunication Co. - Fixed Line Telecommunication Sec... with columns for Mkt, Scrip, BVol, Buy, Sell, SVol, LastPrice, Change, %Change, and Trade. Other windows include 'Market Depth By Order', 'Market Depth By Price', and 'Message Window'. The message log at the bottom shows system messages such as 'Welcome to FDM Capital Securities(Pvt.) Limited Trading Terminal!', 'Market is Open', and 'Feed Server: Connection with server has been lost!'.

Information about all the shortcuts can be found by pressing “F1”.

Following window will appear having all the shortcut details,

Window	Shortcut keys
About Trade Cast	Ctrl + A
Account Statement	Alt + A
Activity Log	Ctrl + F7
Bunch Order	F6
Buy	F4
Cancel	F11
Cash Withdrawal Request	Alt + R
Cash Withdrawal Statement	Alt + W
Change Order	F10
Change Password	Alt + P
Change PIN	Alt + C
Daily Trade Report	Ctrl + F8
Detailed Quote	Ctrl + F4
Indices Summary	Ctrl + E
Exposure Watch	F2
Top 30 Movers	Ctrl + T
Watches	F12
Logout	Alt + F4
Market Depth By Order	Ctrl + F3
Market Depth By Price	Ctrl + F2
Message Window	Ctrl + F12
Outstanding Log	Ctrl + F5
Preferences	Ctrl + P
Restore Default Layout	Ctrl + R
Scrip Browse	F3
Sector Performance	Ctrl + S
Sell	F5
Shortcut Keys	F1
Short Sell	F8

Cash Withdrawal Request

TradeCast
Cash Withdrawal Request
✕

Cash Withdrawal Request

Please select the account for which you wish to make Cash Withdrawal

Account No PIN

Cash Withdrawal Statement Forgot PIN?

Available Amount	Withdrawal Amount	Remaining Amount
PKR <input type="text"/>	- <input type="text"/>	= <input type="text"/>

Cheque Delivery

Please select this option if you would like us to send cheque at your registered Address.

Cheque Pickup Please select

Please select this option if you would like to pickup cheque from our branches.

Please enter your comments (if required)